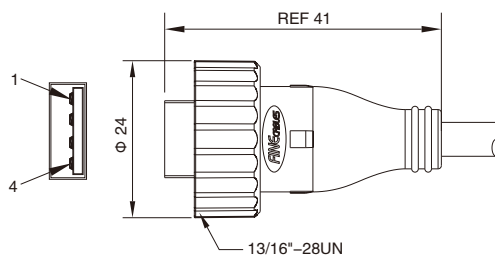


USB2.0 Male Molded Cable, Straight

- Connector series: USB 2.0
- Gender: Male
- Locking type: Fix screw
- Mounting type: Straight
- Part No.: USB2.0-WM04STMF-XXCB

X refers to cable specification



RoHS

General information

Ambient temperature:	-20°C ~ +80°C
Connector insert:	PBT
Connector contacts:	Brass with silver plated
Connector overmold:	TPU
Coupling nut/screw:	PA + GF
Seal/O-ring:	FKM

Insulation resistance:	≥ 100MΩ
Contact resistance :	≤ 30mΩ
Shielding:	Available
IP rating:	IP67 in locked condition

Electrical data & Mechanical data

Contacts	Rated current	Voltage		Cable jacket	Wire insulation	Part No.
		A/C	D/C			
USB 2.0 Type A male	1.5A	30V	30V	PVC	PVC	USB2.0-WM04STMF-XXCB

Note: X refers to cable specification

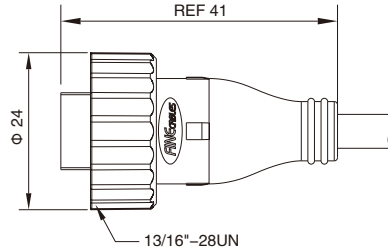
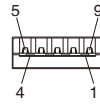
Remarks

- Please refer to Page 578 for the Conversion between American Wire Gauge AWG and Wire Cross-section mm².
- Please refer to Page 449 for products' part number encoding rule.

USB3.0 Male Molded Cable, Straight

- Connector series: USB 3.0
- Gender: Male
- Locking type: Fix screw
- Mounting type: Straight
- Part No.: USB3.0-WM04STMF-XXCB

X refers to cable specification



RoHS

General information

Ambient temperature:	-20°C ~ +80°C
Connector insert:	PBT
Connector contacts:	Brass with silver plated
Connector overmold:	TPU
Coupling nut/screw:	PA + GF
Seal/O-ring:	FKM

Insulation resistance:	≥ 100MΩ
Contact resistance :	≤ 30mΩ
Shielding:	Available
IP rating:	IP67 in locked condition

Electrical data & Mechanical data

Contacts	Rated current	Voltage		Cable jacket	Wire insulation	Part No.
		A/C	D/C			
USB 3.0 Type A male	1.8A	30V	30V	PVC	PVC	USB3.0-WM04STMF-XXCB

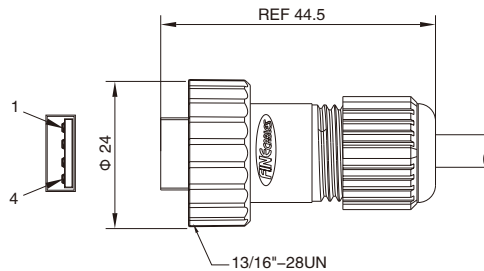
Note: X refers to cable specification

Remarks

- Please refer to Page 578 for the Conversion between American Wire Gauge AWG and Wire Cross-section mm².
- Please refer to Page 449 for products' part number encoding rule.

USB2.0 Male Field Wirable Assembly, Straight

- Connector series: USB 2.0
- Gender: Male
- Locking type: Fix screw
- Mounting type: Straight
- Part No.: USB2.0-WM04STAF-XXCB



RoHS

General information

Ambient temperature:	-20°C ~ +80°C
Connector insert:	PBT
Connector contacts:	Brass with silver plated
Connector overmold:	PA + GF
Coupling nut/screw:	PA + GF
Seal/O-ring:	FKM

Insulation resistance:	≥ 100MΩ
Contact resistance :	≤ 30mΩ
Shielding:	Available
IP rating:	IP67 in locked condition

Electrical data & Mechanical data

Contacts		Rated current	Voltage		Cable jacket	Wire insulation	Part No.
			A/C	D/C			
USB 2.0	 Type A male	1.5A	30V	30V	PVC	PVC	USB2.0-WM04STAF-XXCB

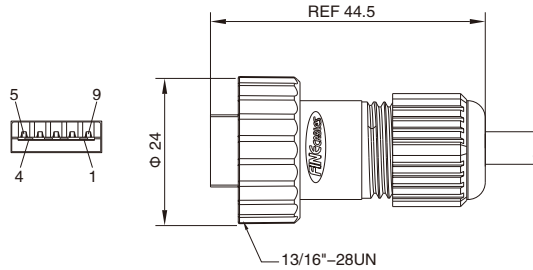
Note: X refers to cable specification

Remarks

- Please refer to Page 578 for the Conversion between American Wire Gauge AWG and Wire Cross-section mm².
- Please refer to Page 449 for products' part number encoding rule.

USB3.0 Male Field Wirable Assembly, Straight

- Connector series: USB 3.0
- Gender: Male
- Locking type: Fix screw
- Mounting type: Straight
- Part No.: USB3.0-WM04STAF-XXCB



RoHS

General information

Ambient temperature:	-20°C ~ +80°C
Connector insert:	PBT
Connector contacts:	Brass with silver plated
Connector overmold:	PA + GF
Coupling nut/screw:	PA + GF
Seal/O-ring:	FKM

Insulation resistance:	≥ 100MΩ
Contact resistance :	≤ 30mΩ
Shielding:	Available
IP rating:	IP67 in locked condition

Electrical data & Mechanical data

Contacts	Rated current	Voltage		Cable jacket	Wire insulation	Part No.
		A/C	D/C			
USB 3.0 Type A male	1.8A	30V	30V	PVC	PVC	USB3.0-WM04STAF-XXCB

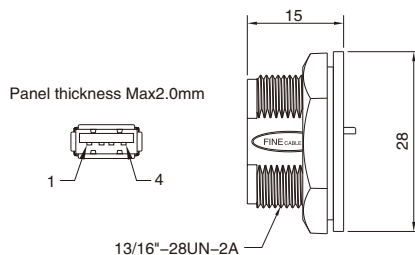
Note: X refers to cable specification

Remarks

- Please refer to Page 578 for the Conversion between American Wire Gauge AWG and Wire Cross-section mm².
- Please refer to Page 449 for products' part number encoding rule.

USB2.0 Female Panel Mount, Solder, Front fastened

- Connector series: USB 2.0
- Gender: Female
- Locking type: Fix screw
- Mounting type: Front fastened
- Part No.: USB2.0-WF04STSP



RoHS

General information

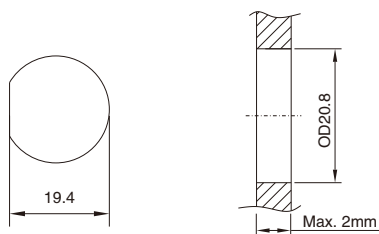
Ambient temperature:	-20°C ~ +80°C
Connector insert:	PBT+GF
Connector contacts:	Phosphor bronze with gold plated
Connector body:	PA+GF
Coupling nut/screw:	PA+GF
Seal/O-ring:	FKM

Insulation resistance:	≥ 100MΩ
Contact resistance :	≤ 30mΩ
Shielding:	Available
IP rating:	IP67 in locked condition

Electrical data & Mechanical data

Contacts	Contacts termination	Rated current	Voltage		Wire insulation	Part No.
			A/C	D/C		
USB 2.0 Type A female	Solder version	1.5A	30V	30V	PVC wire or customized	USB2.0-WF04STSP

Panel Cut-out Dimensions

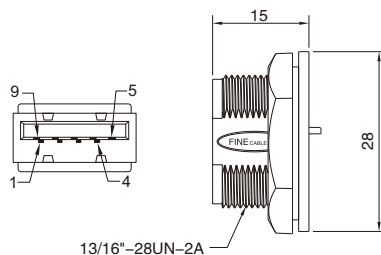


Remarks

- Please refer to Page 578 for the Conversion between American Wire Gauge AWG and Wire Cross-section mm².
- Please refer to Page 449 for products' part number encoding rule.

USB3.0 Female Panel Mount, Solder, Front fastened

- Connector series: USB 3.0
- Gender: Female
- Locking type: Fix screw
- Mounting type: Front fastened
- Part No.: USB3.0-WF04STSP



RoHS

General information

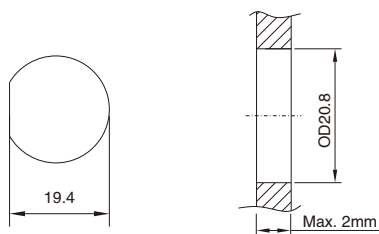
Ambient temperature:	-20°C ~ +80°C
Connector insert:	PBT+GF
Connector contacts:	Phosphor bronze with gold plated
Connector body:	PA+GF
Coupling nut/screw:	PA+GF
Seal/O-ring:	FKM

Insulation resistance:	≥ 100MΩ
Contact resistance :	≤ 30mΩ
Shielding:	Available
IP rating:	IP67 in locked condition

Electrical data & Mechanical data

Contacts	Contacts termination	Rated current	Voltage		Wire insulation	Part No.
			A/C	D/C		
USB 3.0 Type A female	Solder version	1.8A	30V	30V	PVC wire or customized	USB3.0-WF04STSP

Panel Cut-out Dimensions



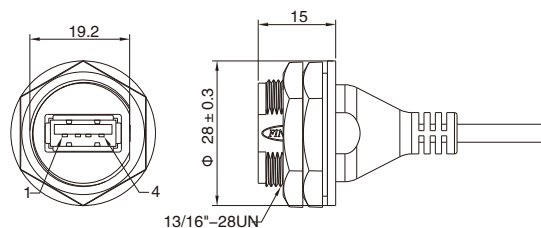
Remarks

- Please refer to Page 578 for the Conversion between American Wire Gauge AWG and Wire Cross-section mm².
- Please refer to Page 449 for products' part number encoding rule.

USB2.0 Female Panel Mount+SR, Solder, Front fastened

- Connector series: USB 2.0
- Gender: Female
- Locking type: Fix screw
- Mounting type: Front fastened
- Part No.: USB2.0-WF04STSP-XXX

X refers to cable specification



RoHS

General information

Ambient temperature:	-20°C ~ +80°C
Connector insert:	PBT+GF
Connector contacts:	Phosphor bronze with gold plated
Connector body:	PA+GF
Coupling nut/screw:	PA+GF
SR over-molded:	TPU
Seal/O-ring:	FKM

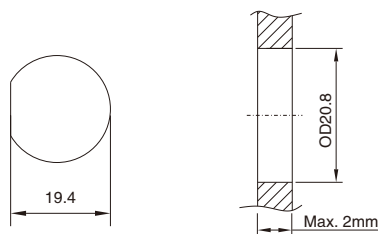
Insulation resistance:	≥ 100MΩ
Contact resistance :	≤ 30mΩ
Shielding:	Available
IP rating:	IP67 in locked condition

Electrical data & Mechanical data

Contacts	Contacts termination	Rated current	Voltage		Wire insulation	Part No.
			A/C	D/C		
USB 2.0 Type A female	Solder version	1.5A	30V	30V	PVC wire or customized	USB2.0-WF04STSP-XXX

Note: X refers to cable specification

Panel Cut-out Dimensions



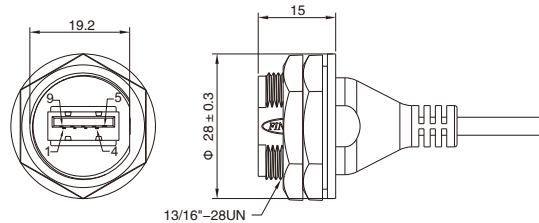
Remarks

- Please refer to Page 578 for the Conversion between American Wire Gauge AWG and Wire Cross-section mm².
- Please refer to Page 449 for products' part number encoding rule.

USB3.0 Female Panel Mount+SR, Solder, Front fastened

- Connector series: USB 3.0
- Gender: Female
- Locking type: Fix screw
- Mounting type: Front fastened
- Part No.: USB3.0-WF04STSP-XXX

X refers to cable specification



RoHS

General information

Ambient temperature:	-20°C ~ +80°C
Connector insert:	PBT+GF
Connector contacts:	Phosphor bronze with gold plated
Connector body:	PA+GF
Coupling nut/screw:	PA+GF
SR over-molded:	TPU
Seal/O-ring:	FKM

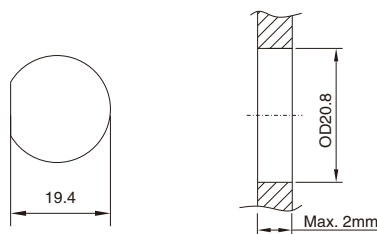
Insulation resistance:	≥ 100MΩ
Contact resistance :	≤ 30mΩ
Shielding:	Available
IP rating:	IP67 in locked condition

Electrical data & Mechanical data

Contacts	Contacts termination	Rated current	Voltage		Wire insulation	Part No.
			A/C	D/C		
USB 3.0 Type A female	Solder version	1.8A	30V	30V	PVC wire or customized	USB3.0-WF04STSP-XXX

Note: X refers to cable specification

Panel Cut-out Dimensions



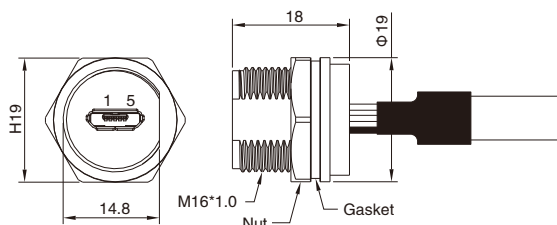
Remarks

- Please refer to Page 578 for the Conversion between American Wire Gauge AWG and Wire Cross-section mm².
- Please refer to Page 449 for products' part number encoding rule.

Micro-USB, Female Panel Mount, Solder, Front fastened

- Connector series: Micro-USB
- Gender: Female
- Locking type: Fix screw
- Mounting type: Front fastened
- Part No.: MB-WF05STSP-MICRO

- suitable cable Dia: A: 3.5~4.5mm
B: 4.5~5.5mm



RoHS

General information

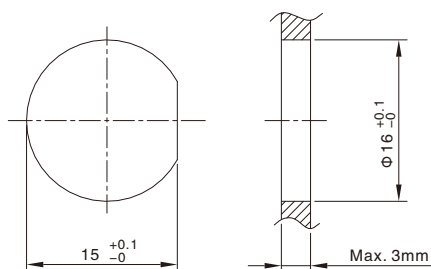
Ambient temperature:	-20°C ~ +80°C
Connector insert:	LCP+GF/PBT
Connector contacts:	Brass with gold plated
Connector nut/screw:	PA+GF
Connector body:	PA+GF
Seal / O-ring:	FKM

Insulation resistance:	≥ 100MΩ
Contact resistance :	≤ 30mΩ
Shielding:	Available
IP rating:	IP67 in locked condition

Electrical data & Mechanical data

Contacts	Contacts termination	Rated current	Voltage		Wire insulation	Part No.
			A/C	D/C		
Micro USB 5P Micro B female	Solder version	1A	30V	30V	PVC wire or customized	MB-WF05STSP-MICRO

Panel Cut-out Dimensions



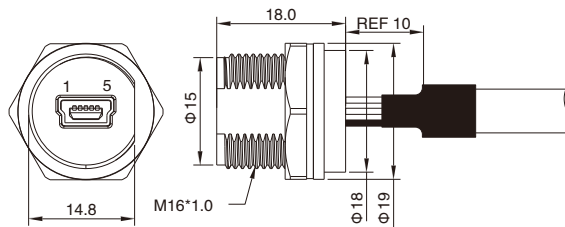
Remarks

- Please refer to Page 578 for the Conversion between American Wire Gauge AWG and Wire Cross-section mm².
- Please refer to Page 449 for products' part number encoding rule.

Mini-USB, Female Panel Mount, Solder, Front fastened

- Connector series: Mini-USB
- Gender: Female
- Locking type: Fix screw
- Mounting type: Front fastened
- Part No.: MB-WF05STSP-XXX

X refers to cable specification



RoHS

General information

Ambient temperature:	-20°C ~ +80°C
Connector insert:	PBT+GF
Connector contacts:	Phosphor bronze with gold plated
Connector body:	PA+GF
Coupling nut/screw:	PA+GF
Seal/O-ring:	FKM

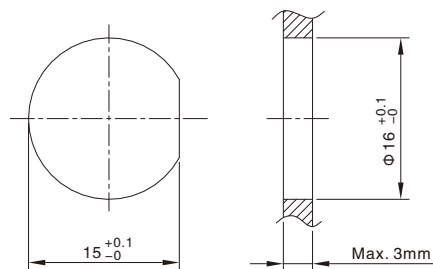
Insulation resistance:	≥ 100MΩ
Contact resistance :	≤ 30mΩ
Shielding:	Available
IP rating:	IP67 in locked condition

Electrical data & Mechanical data

Contacts	Contacts termination	Rated current	Voltage		Wire insulation	Part No.
			A/C	D/C		
Mini USB 5P Mini B female	Solder version	1A	30V	30V	PVC wire or customized	MB-WF05STSP-XXX

Note: X refers to cable specification

Panel Cut-out Dimensions



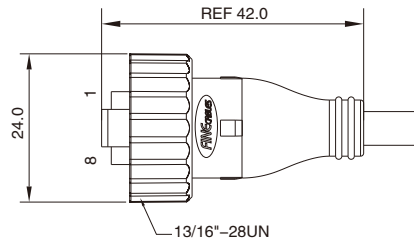
Remarks

- Please refer to Page 578 for the Conversion between American Wire Gauge AWG and Wire Cross-section mm².
- Please refer to Page 449 for products' part number encoding rule.

RJ45 Male Molded Cable

- Connector series: RJ45
- Gender: Male
- Locking type: Fix screw
- Mounting type: Straight
- Part No.: RJ45-WM08STMF-XXXX25

X refers to cable specification



General information

Ambient temperature:	-20°C ~ +60°C
Connector insert:	PC
Connector contacts:	Copper alloy with gold plated
Connector overmold:	TPU
Coupling nut/screw:	PA + GF
Seal/O-ring:	FKM

Insulation resistance:	≥ 100MΩ
Contact resistance :	≤ 30mΩ
Shielding:	Available or Unavailable
IP rating:	IP67 in locked condition

Electrical data & Mechanical data

Contacts	Rated current	Voltage		Wire gauge / size		Cable jacket	Wire insulation	Part No.
		A/C	D/C	AWG	mm ²			
RJ45 8P8C male	1.5A	125V	125V	24AWG	0.25	PVC	PE	RJ45-WM08STMF-XXXX25

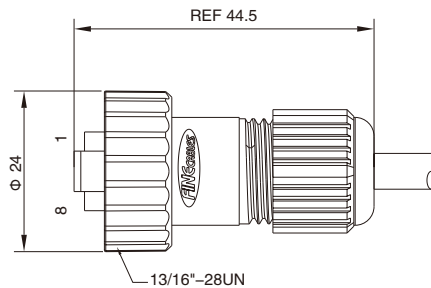
Note: X refers to cable specification

Remarks

- Please refer to Page 578 for the Conversion between American Wire Gauge AWG and Wire Cross-section mm².
- Please refer to Page 449 for products' part number encoding rule.

RJ45 Male Field Wirable Assembly, Straight

- Connector series: RJ45
- Gender: Male
- Locking type: Fix screw
- Mounting type: Straight
- Part No.: RJ45S-WM08STAF



General information

Ambient temperature:	-20°C ~ +60°C
Connector insert:	PC
Connector contacts:	Copper alloy with gold plated
Connector body:	PA + GF
Coupling nut/screw:	PA + GF
Seal/O-ring:	FKM

Insulation resistance:	≥ 100MΩ
Contact resistance :	≤ 30mΩ
Shielding:	Available
IP rating:	IP67 in locked condition

Electrical data & Mechanical data

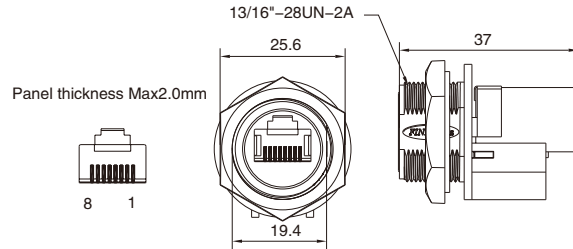
Contacts	Rated current	Voltage		Wire gauge / size		Cable jacket	Wire insulation	Part No.
		A/C	D/C	AWG	mm ²			
RJ45 8P8C male	1.5A	125V	125V	24AWG	0.25	PVC	PE	RJ45S-WM08STAF

Remarks

- Please refer to Page 578 for the Conversion between American Wire Gauge AWG and Wire Cross-section mm².
- Please refer to Page 449 for products' part number encoding rule.

RJ45 Female Panel Mount, Front fastened

- Connector series: RJ45
- Gender: Female
- Locking type: Fix screw
- Mounting type: Front fastened
- Part No.: RJ45S-WF08STSP



General information

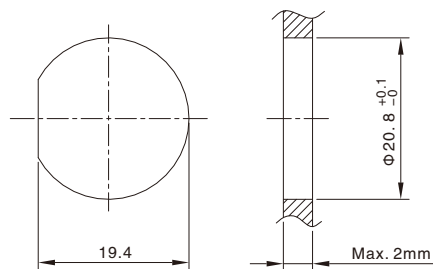
Ambient temperature:	-20°C ~ +80°C
Connector insert:	PBT+GF
Connector contacts:	Phosphor bronze with gold plated
Coupling nut/screw:	PA+GF
Seal / O-ring:	FKM

Insulation resistance:	≥ 100MΩ
Contact resistance :	≤ 30mΩ
Shielding:	Available
IP rating:	IP67 in locked condition

Electrical data & Mechanical data

Contacts	Rated current	Voltage		Part No.
		A/C	D/C	
RJ45 8P8C female	1.5A	125V	125V	RJ45S-WF08STSP

Panel Cut-out Dimensions

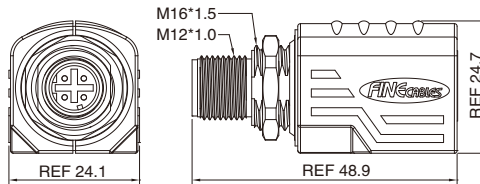


Remarks

- Please refer to Page 449 for products' part number encoding rule.

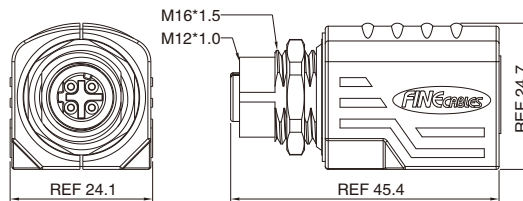
M12-RJ45 Adapters, Straight, Weld type

- Connector series: M12 to RJ45 Adapter
- Gender: Male
- Coding: D
- Locking type: Fix screw
- Mounting type: Front mounting
- Part No.: M12/RJ45-MDST(P)



M12-RJ45 Adapters, Straight, Weld type

- Connector series: M12 to RJ45 Adapter
- Gender: Female
- Coding: D
- Locking type: Fix screw
- Mounting type: Front mounting
- Part No.: M12/RJ45-FDST(P)



General information

Ambient temperature:	-25°C ~ +85°C
Connector insert:	PA
Connector contacts:	Copper alloy
Connector nut/screw:	Brass with nickel plated
Seal / O-ring:	FKM

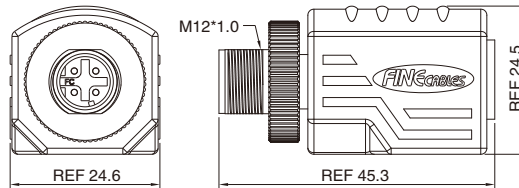
Shielding:	Unavailable
IP rating:	M12 male IP67 In locked condition M12 female IP65 In locked condition

Electrical data & Mechanical data

Contacts	Rated current	Voltage		Part No.
		A/C	D/C	
04 pins M12 male M12 female RJ45 female	1.5A	150V	150V	M12/RJ45-MDST(P) M12/RJ45-FDST(P)

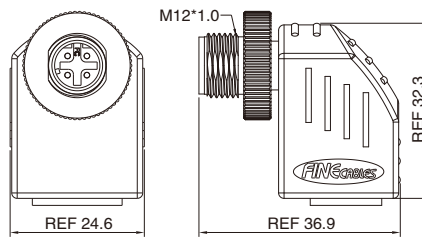
M12-RJ45 Adapters, Straight, Molded type

- Connector series: M12 to RJ45 Adapter
- Gender: Male
- Coding: D
- Locking type: Fix screw
- Mounting type: Straight
- Part No.: M12/RJ45-MDST



M12-RJ45 Adapters, Angled, Molded type

- Connector series: M12 to RJ45 Adapter
- Gender: Male
- Coding: D
- Locking type: Fix screw
- Mounting type: Right angled
- Part No.: M12/RJ45-MDRA



General information

Ambient temperature:	-25°C ~ +85°C
Connector body:	TPU
Connector contacts:	Copper alloy
Connector nut/screw:	Brass with nickel plated

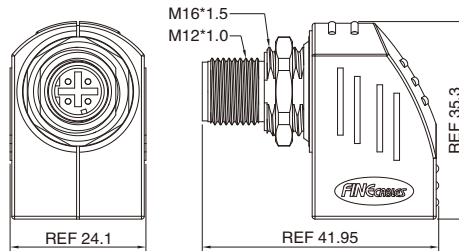
Shielding:	Unavailable
IP rating:	M12 IP67 In locked condition

Electrical data & Mechanical data

Contacts	Rated current	Voltage		Part No.
		A/C	D/C	
04 pins M12 male RJ45 female	1.5A	150V	150V	M12/RJ45-MDST M12/RJ45-MDRA

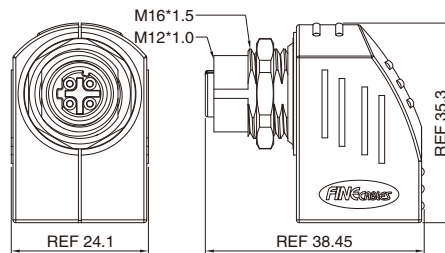
M12-RJ45 Adapters, Angled, Weld type

- Connector series: M12 to RJ45 Adapter
- Gender: Male
- Coding: D
- Locking type: Fix screw
- Mounting type: Right angled
- Part No.: M12/RJ45-MDRA(P)



M12-RJ45 Adapters, Angled, Weld type

- Connector series: M12 to RJ45 Adapter
- Gender: Female
- Coding: D
- Locking type: Fix screw
- Mounting type: Right angled
- Part No.: M12/RJ45-FDRA(P)



General information

Ambient temperature:	-25°C ~ +85°C
Connector insert:	PA
Connector contacts:	Copper alloy
Connector nut/screw:	Brass with nickel plated
Seal / O-ring:	FKM

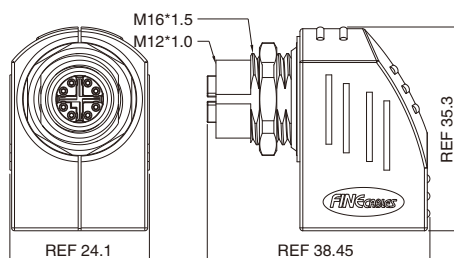
Shielding:	Unavailable
IP rating:	M12 male IP67 In locked condition M12 female IP65 In locked condition

Electrical data & Mechanical data

Contacts	Rated current	Voltage		Part No.
		A/C	D/C	
04 pins M12 male M12 female RJ45 female	1.5A	150V	150V	M12/RJ45-MDRA(P) M12/RJ45-FDRA(P)

M12-RJ45 Adapters, Angled, Weld type, X-coding

- Connector series: M12 to RJ45 Adapter
- Gender: Female
- Coding: X
- Locking type: Fix screw
- Mounting type: Front mounting
- Part No.: M12/RJ45-FXRA(P)



General information

Ambient temperature:	-25°C ~ +85°C
Connector insert:	PA
Connector contacts:	Copper alloy
Connector nut/screw:	Brass with nickel plated
Seal / O-ring:	FKM

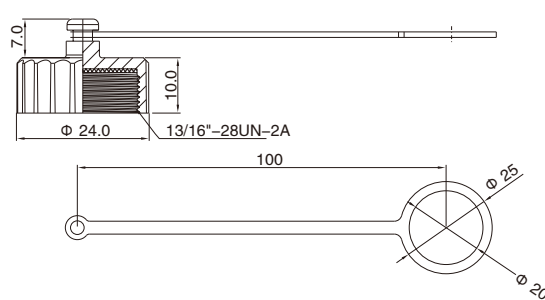
Shielding:	Unavailable
IP rating:	M12 IP65 In locked condition

Electrical data & Mechanical data

Contacts	Rated current	Voltage		Part No.
		A/C	D/C	
08 pins M12 X-coding	1.5A	150V	150V	M12/RJ45-FXRA(P)
 RJ45 female				

USB/RJ45 Protection cap for Female Panel-mount Connector

- Connector series: USB/RJ45
- Gender: for Female
- Locking type: Fix screw
- Part No.: PCN13/16"-28UN-1

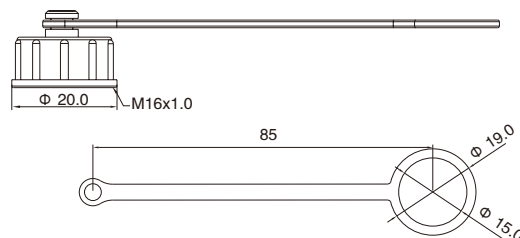


General information

Material:	PA+GF
O-ring:	FKM
Loop:	TPU
Color:	Black
Degree of protection:	IP67 in locked condition

Mini-USB/Micro-USB/Mini-Din Protection cap for Female Panel-mount Connector

- Connector series: Mini-USB/Micro-USB/Mini-Din
- Gender: for Female
- Locking type: Fix screw
- Part No.: PCN16x1.0-1



General information

Material:	PA+GF
O-ring:	FKM
Loop:	TPU
Color:	Black
Degree of protection:	IP67 in locked condition